



# Saffron Valley

Maximize your sense of space with open  
skies, mountains & lush greenary

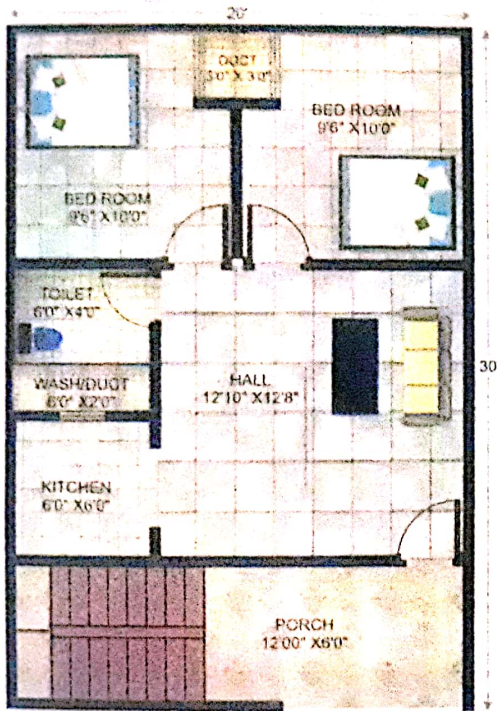


Saffron Valley is an organised and meticulously carved landmark project situated on the most vantage location of South Bhopal, Chiklod Road, before AISECT University, just in front of CRPF and RAF; spread over 7 acres of lush green expanse deftly woven with every modern day amenities for the entire family.



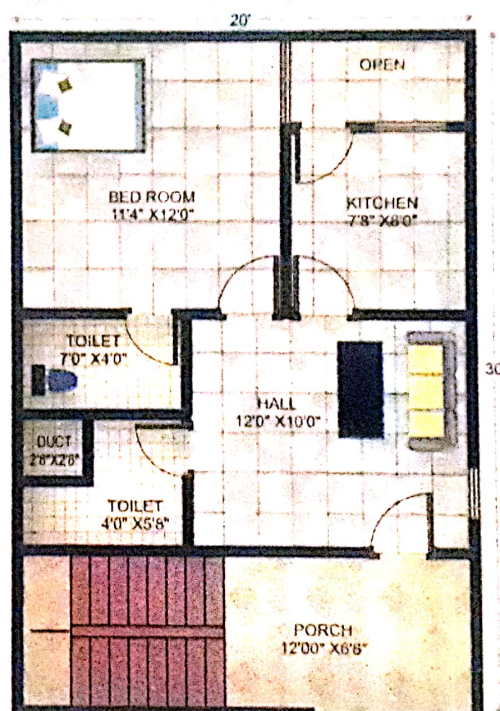
# **SPECIFICATIONS**

Structure	Reinforced Structure
Flooring	various flooring 282
Kitchen	Granite platform, stainless steel sink, up to 2" dado tiles
Toilet	Anti skid tiles
Wall Finish	Internal wall plastered and painted with OBD
External Wall	Plastered and painted with exterior paints
Door	Main Hardwood Frame with Flush Door / other doors Dewas Section Frame with Flush Doors
Windows	Powder coated aluminum sliding window with MS grill
Electrification	PVC Concealed ISI Quality wiring with circuit breakers
Plumbing	Concealed piping system in kitchen & toilet



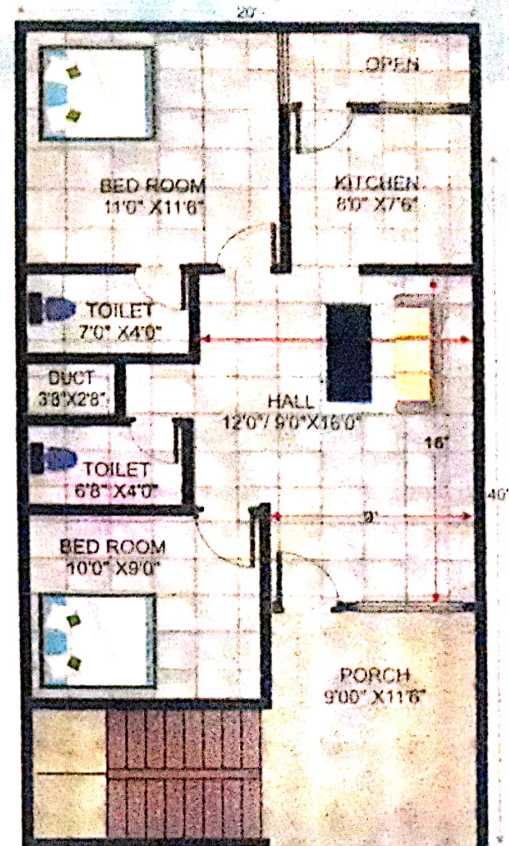
**2 BHK**

Plot Size : 600 Sqft  
Super Builtup : 600 Sqft



**1 BHK**

Plot Size : 600 Sqft  
Super Builtup : 600 Sqft



**2 BHK**

Plot Size : 800 Sqft  
Super Builtup : 800 Sqft



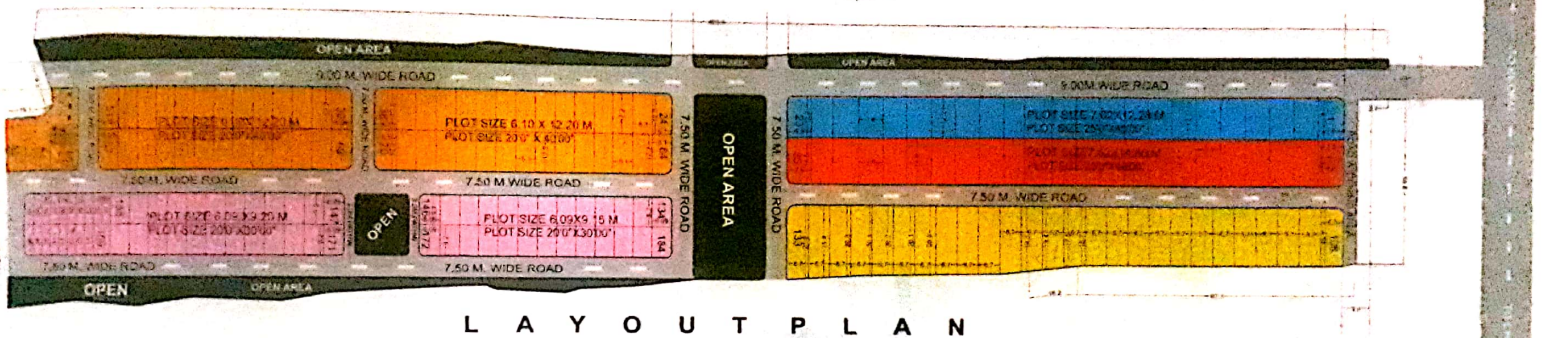
## Discover the Essence of Suburban Life

A Stress Free Healthy Heaven for Family, where you can drench in the sun or soak in the rain. Simply chase the butterfly or follow the Rainbow.. Wake up to the calming chirp of a thousand birds and sleep under the shade of million stars, in the calm environs at Saffron Valley, which is developed with care to share the elements without disturbing the precious balance of Nature. Saffron Valley will take you away from the

congestion of the city yet exists close enough to avail proximity from National Highway, State Highway, Road and Rail Connections, Central School, Collages, AISECT, BITS, MAXIM, IPER, IPS Academy, Malls like Ashima and C21 and the developing Industrial Project of AKVN just in front, so that you and your family is never far away from life...



Bangrasia Square



L A Y O U T P L A N

- 20x40= 800 sq.ft Plot Size
- 20x30= 600 sq.ft Plot Size
- Uneven Plots
- 25x48= 1200 sq.ft Plot Size
- 25x40= 1000 sq.ft Plot Size

## Life Inspiring Amenities

- ★ Gated Luxury Plots with 24x7 Security
- ★ Fabulous Entrance Gate with stylish development and landscaping
- ★ 9 meter wide Main Road covered campus with Boundary Wall
- ★ Beautiful Garden and open area for children play
- ★ Water supply through common tube well/sump well
- ★ Electric connection and Elegant Street Lighting
- ★ Covered sewage and drainage system
- ★ Tar road / Paved Blocks with Planted Pathway and Walk area
- ★ Malls and conveniences nearby to fulfill daily necessities and recreational pursuits
- ★ Each plot promise beautiful frame of Landscape, Mountain and Greenary
- ★ Eco friendly Pollution free Green Open Space with Vastu considerations
- ★ One of the Fastest Growing Locality of modern Bhopal
- ★ East West facing plots ideal for Residential and Investment Purpose

*Smart people don't wait to buy real estate, They buy real estate and wait*



# Location Plan



Project by

**SID Realtors**

FF-8, First Floor, B Block, Mansarovar Complex,  
Nr. Habibganj Railway Station  
Tel. : 0755-4929220 | E-mail : sidrealtors.bpl@gmail.com  
Website : www.saffronrealtors.com

